

**2 x HIGHLY PROMINENT CLASS E PREMISES
SUITABLE FOR VARIETY OF USES
797 sq ft EACH PREMISES
TO LET**



**51-52 GEORGE STREET
HOVE
BN3 3YB**

71 Church Road, Hove, Sussex BN3 2BB T. 01273 233333 E. tom@tomgraves.co.uk www.tomgraves.co.uk

These particulars do not constitute any part of an offer or a contract. All statements contained in these particulars are made without responsibility on the part of Tom Graves and should not be relied upon as a statement or representation of fact. Any intending purchaser or tenant must satisfy himself by inspection or otherwise as to the correctness of each of the statements contained in these particulars. The vendor does not make or give and neither Tom Graves nor any person in their employment has any authority to make or give any representation or warranty whatsoever.

LOCATION

Situated in a highly prominent and visible position at perhaps Hove's premier retail thoroughfare of George Street, Hove. This pedestrianised thoroughfare runs between Blatchington Road and Church Road with numerous multiple and individual retailers bars and restaurants to include Costa, Weatherspoons, Café Nero, Santander, Halifax and Barclays to name but a few.

ACCOMMODATION

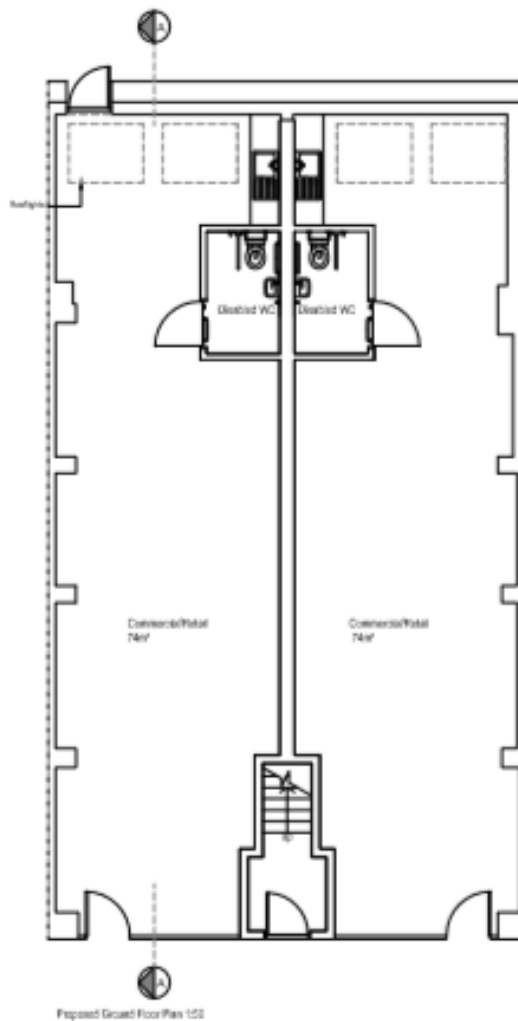
The premises comprise 2 x ground floor class e premises, arranged as follows:

SHOP 1 **797 sq ft (74 m2)**

- Disabled WC
- Kitchenette
- New Shop Front

SHOP 2 **797 sq ft (74 m2)**

- Disabled WC
- Kitchenette
- New Shop Front



TENURE	Leasehold	
LEASE	New Lease	
RENT	Shop 1	£22,000 + VAT per annum exclusive
	Shop 2	£22,000 + VAT per annum exclusive
N.B	The whole premises could be Let on one lease at a rent of £42,000 + VAT pax for 1594 sq ft subject to landlords consent.	
UNIFORM BUSINESS RATES	Description:	Shop and Premises
	Rateable Value:	£TBC
	Rates Payable:	£TBC
VAT	VAT is chargeable on the terms quoted	
LEGAL FEES	Incoming tenant to bear both parties legal costs	
VIEWING	Strictly via a prior appointment through sole agent: Tom Graves Property Ltd Tel: 01273 233333	